



Heating • Ventilation • Hand Dryers

Sunray RF plastic end and battery replacing guide

Date: 23/02/2021

1. TOOLS NEEDED

In order to replace the plastic end of the heater we will need the following tools and accessories:

- Philips screwdriver

2. REMOVAL OF PLASTIC END TO BE REPLACED

a) RADIATOR DISCONNECTION

Ensure the radiator is disconnected from the 240v power supply.

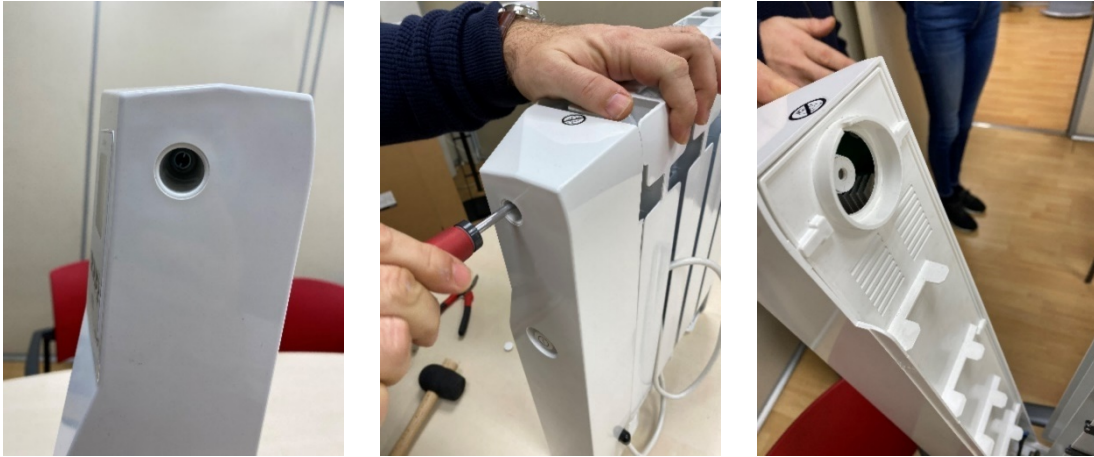
b) PLASTIC END COVER REMOVAL

Once the radiator has been disconnected, remove the plastic end located on the right-hand side of the heater.



c) PLASTIC END DISASSEMBLY

Begin to disassemble the plastic end by loosening the screw that we have just uncovered. A Philips screwdriver long enough to reach the screw is required. Retain the screw.



Top screw removal

The plastic end from the body of the radiator will still be attached to the bottom of the heater. In order to completely separate the plastic end from the rest of the heater gently hit the top of it with your fist.

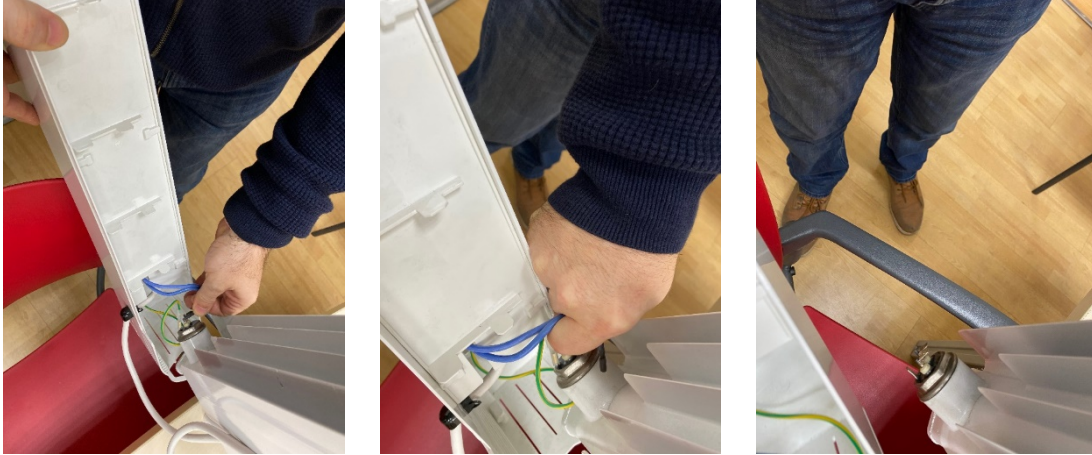


Bottom clip detachment

Be aware the end is still connected by the wiring.

d) ELEMENT DISCONNECTION

Gently pulling the wires from the terminal they should come out easily.



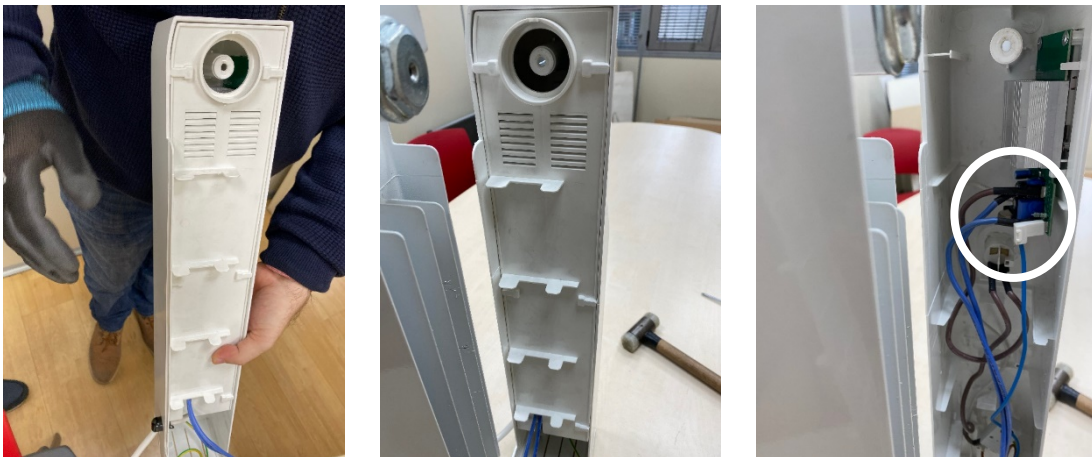
Faston terminals disconnection from the heating element

3. BATTERY REPLACEMENT (ONLY WHEN NEEDED)

Skip this step if the battery doesn't need to be replaced.

a) PLASTIC END INSIDE COVER REMOVAL

In order to replace the battery, you will need to remove the inside cover by pulling it.

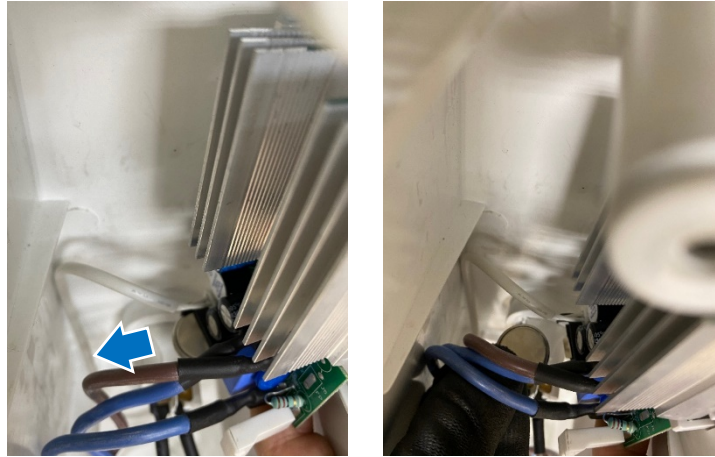


Inside cover removal

Once the cover has been removed, you will find the electronics with the battery to be replaced just at the top of the plastic end.

b) OLD BATTERY REMOVAL

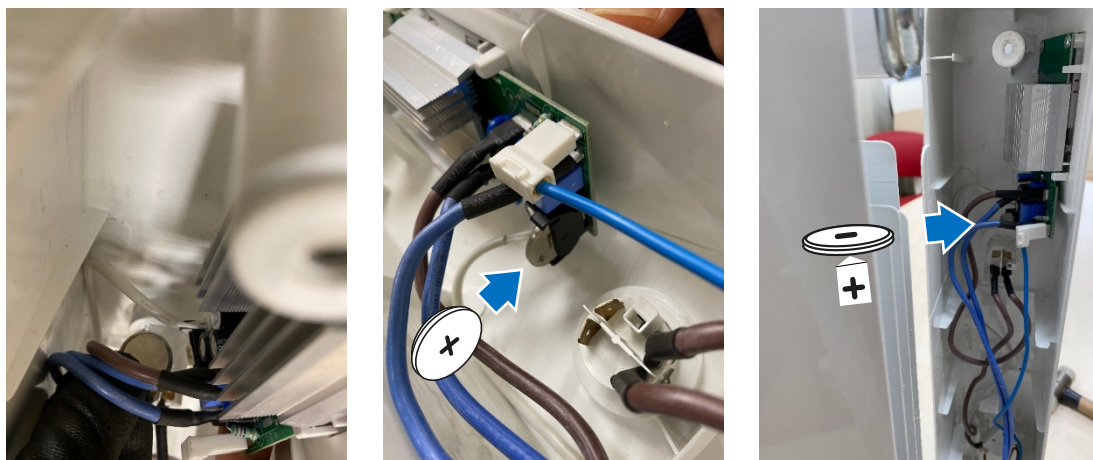
If the battery needs to be replaced it can be removed by gently pulling it out.



Old battery removal

c) INSTALLATION OF THE NEW BATTERY

Insert the new one ensuring the polarity of the battery is correct.



New battery installation

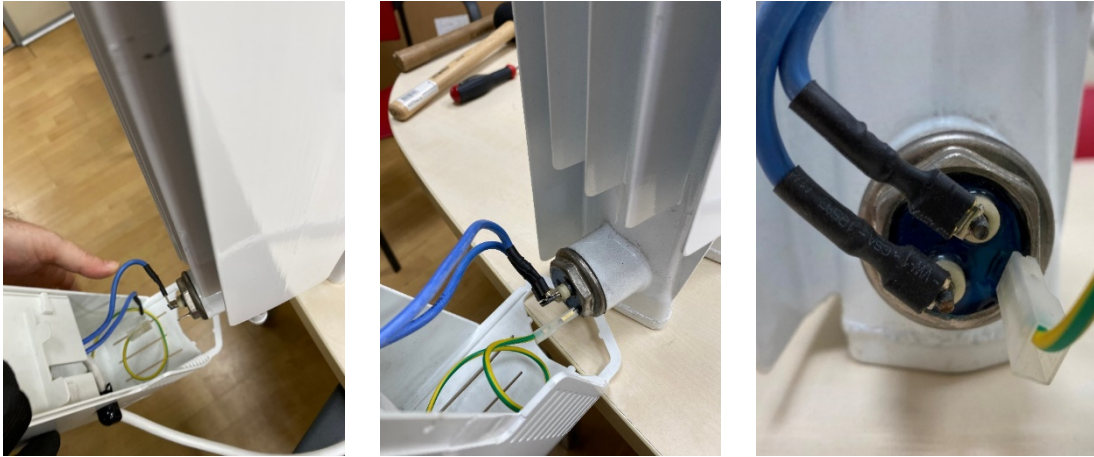
d) INSTALLATION OF THE INSIDE COVER

Replace the inside cover.

4. INSTALLATION OF THE NEW PLASTIC END

a) ELEMENT CONECTION

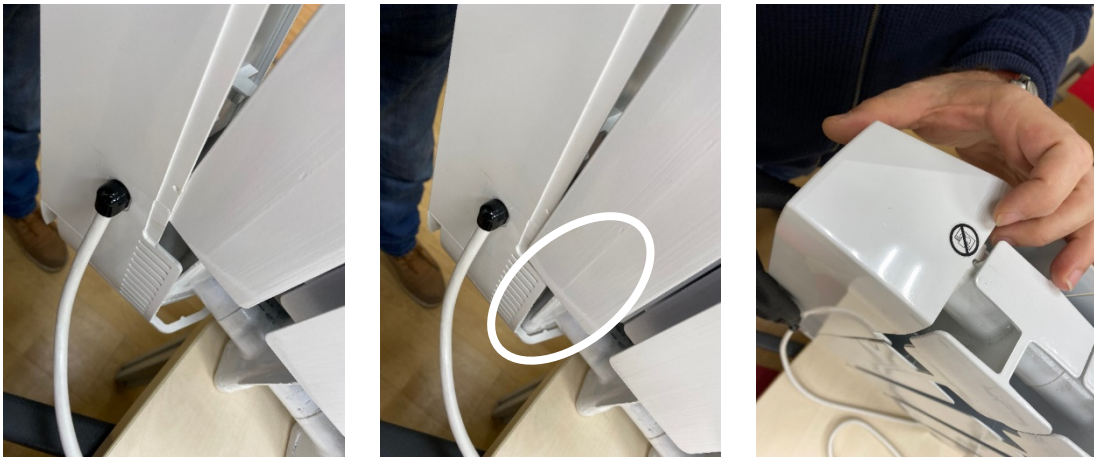
Next connect the element to the thermostat using the wiring terminals.



Wiring terminals connection to the heating element

b) PLASTIC END ASSEMBLY

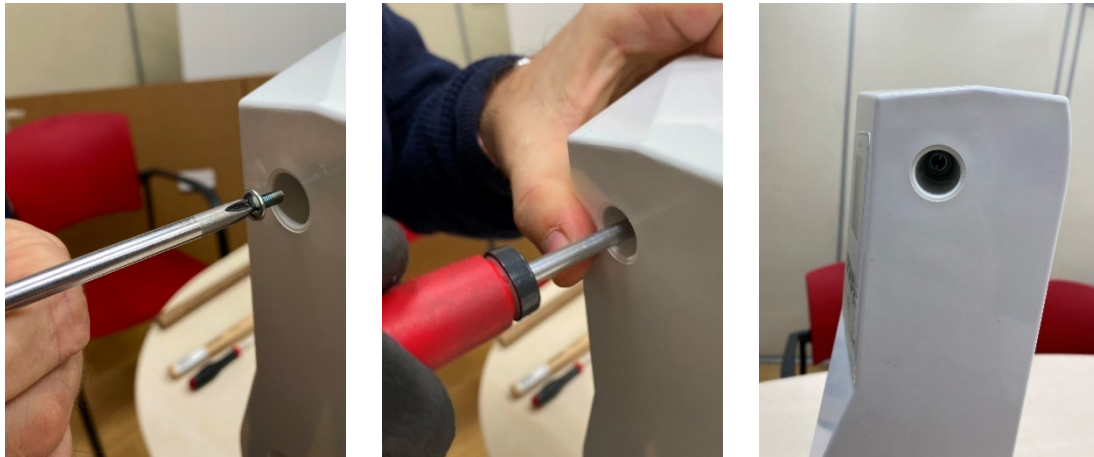
To assemble the plastic end, fit the clips at the bottom of it with the lower part of the heater.



Plastic end installation

Please ensure the clips at the bottom get through the welding at the lower part of the heater.

After the new plastic end has been fitted use the screw to fix it in place.



Plastic end fitting

Using a magnetized screwdriver will be of great help for this step.

c) RADIATOR CONECTION

Ensure the radiator is re-connected to the 240v power supply.

