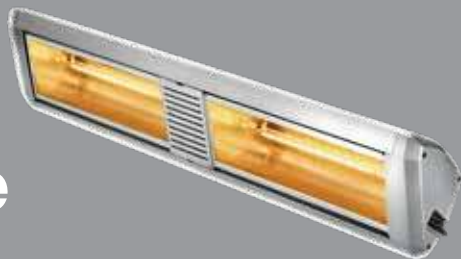


ATC Outdoor Heating Range



atc[®]

Heating • Ventilation • Hand Dryers

 **atc.ie**

Issue 3: May 2021



The **Riviera** heaters are very good and give off excellent heat. It was really helpful that we could hang the 4 Kw in the marquee which gives off excellent heat and creates a lovely atmosphere. **PM**



The six **Sienna** heaters that we installed on the balcony of the Clubhouse have gone down a treat with the members. It has transformed the area as the members are much happier dining outside in the nice warm area. I think some of them might be in touch themselves for their houses. **JB**

Look at what people are saying about **ATC Outdoor Heating**

The **Alfresco Portable** heater is a god send for the balcony in our apartment. Just plug it in and the whole balcony is warm. **CD**



Due to recent restrictions, we needed to transform our outdoor area so we could maximise our space and keep our staff and patrons safe and warm. The **Alfresco** heaters suited the job perfectly and were extremely cost effective. **TH**



ATC **Sienna** Low Glare IP55 Heater

Choose **cost effective, environmentally friendly** Electric Outdoor Heating



Cost per hour



€0.30*

2kw Electric Outdoor Heater



€3.50*

Outdoor Gas Heater

CO² Impact on Environment



12.6 kg*

2kw Electric Outdoor Heater



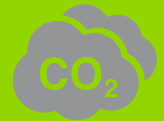
139 kg*

Outdoor Gas Heater

Save **€134.00** each week



Negative impact on the Environment



See full range @ atc.ie/outdoor-heating-range/

*Calculations are based on the heaters operating 7 days at 6 hours per day, 42 hours. The electric Kwh rate is 0.15c and the average life expectancy of a bottle of gas is 10 hours. The cost of a bottle of gas is €35.00. Gas has significantly higher CO2 emissions compared to electricity.

atc

ATC Sienna Outdoor Quartz Infrared Electric Heaters



ATC Sienna 2200W
Infrared Heater Black



ATC Sienna 2200W
Infrared Heater Silver



ATC Sienna 4000W
Infrared Heater Black



ATC Sienna 4000W
Infrared Heater Silver

Optional Bluetooth Heater Controller



See page 19

Waterproof IPX5
'Feel the Heat'

Description

Product Code	SIE2.2KW-BL	SIE4KW-BL
Colour	Black	Black
Product Code	SIE 2.2KW-SL	SIE4KW-SL
Colour	Silver	Silver

Optional Heater Controller

Product Code	INFRA4400
Description	Bluetooth Infrared Heating Controller c/w IR Remote

Optional Sienna Mounting Brackets

See pages 7 & 8

Attractive Design with High Performance

The Sienna high-performance range of Outdoor Quartz Infrared electric heaters are suitable for many applications, industries and environments.

Fitted with Low Glare lamps the heaters provide a comfortable level of heat without the sharp glare of standard infra-red lamps. The Sienna Heaters are for mounting on the wall or structure from 2.7m to 3.5m. Attractive design with a high performance these range of heaters will enhance the outdoor heating experience.

Available in two sizes, 2200W and 4000W, rated IPX5 Weatherproof, the Sienna range is available in Black or Silver finishes.

Product Features

- Attractive Design
- Low Glare Element
- Parabolic Reflector for Even Spread of Heat
- Creates Comfortable Environment
- 2 Sizes; 2200W & 4000W
- 2 Colours; Silver and Black
- Multiple Mounting Heights
- Energy Efficient
- Instant Heat
- Wall Mounting
- Suitable for Commercial – Industrial Applications
- Maintenance Free
- Easy to Install
- IPX5 Weatherproof



ATC Sienna Outdoor Quartz Infrared Electric Heaters

Technical Details

Description

Model	Sienna 2200	Sienna 4000
Product Code	SIE2.2KW-BL SIE 2.2KW-SL	SIE4KW-BL SIE4KW-SL
Colour	Black Silver	Black Silver

Electrical Specifications

Power output (Watts)	2200	4000
Voltage	220-240	220-240
Frequency (Hertz)	50-60	50-60
Current (Amps)	10	18
Lamps	1	2
Lamp Arrangement	Single	Stacked Vertically
Lamp type	Low Glare	Low Glare
Lamp Life ¹	7000 hrs	7000 hrs

¹Lamp life is extended by approximately 25% when used with a soft start controller (see INFRA-4400 p.17)

Emission	IR-A	IR-A
----------	------	------

Mounting and Installation

Installation	Wall / Ceiling (@45° Only)	Wall / Ceiling (@45° Only)
Mounting height	2.7 - 3m	3-3.5m
Heating Area (M²)* @45°	10 - 15	20 - 32
Minimum cable size	3 x 1.5²	2x (3 x 1.5²)
Supplied with or without cable	With (5m)	With (2 x 1.5m)
Lamps switchable or all together	N/A	Separate supplies for each lamp
Dimmable (With controller)	Yes	Yes

Dimensions & Weight

Dimensions (HxWx D) mm	195x465x113	195x910x113
Weight (Kg - Nett)	2.45	4.05
IP Rating	IPX5	IPX5

Approvals

Certifications	CE, IMQ-GS,	CE, IMQ-GS,
----------------	-------------	-------------



Hotels



Restaurants



Pubs



Sports Facilities



Stadia



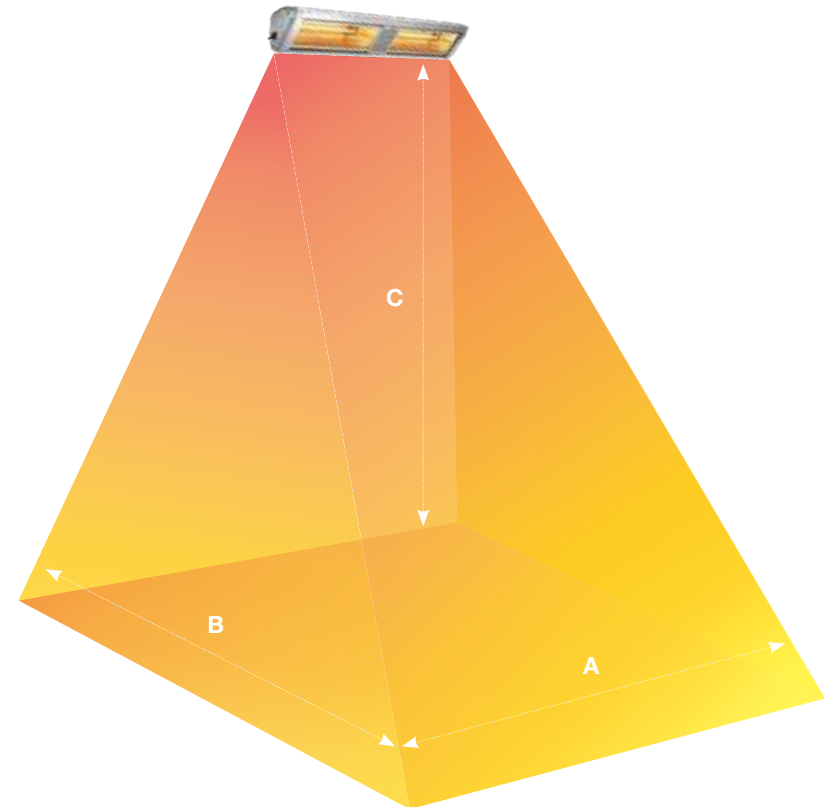
Factories



Warehouses

Heating Area m²

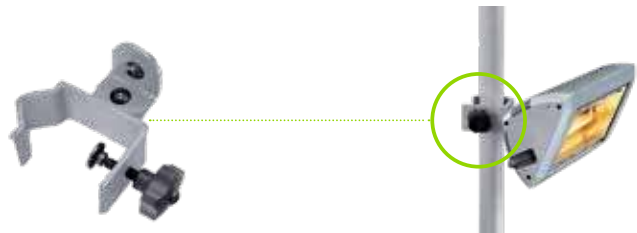
Wall Mounted 45°



Model	Wall Mounted 45°		
	A	B	C
SIE2.2KW	5	3	3
SIE4KW	8	4	4

It is recommended to install Outdoor radiant heaters protected from strong breezes or crosswinds. Based on average ambient temperature of 10°C.

ATC Sienna Outdoor Optional Mounting Brackets



SIE-BL66-Pole
SIE-SL66-Pole
SIE-BL100-Pole
SIE-SL100-Pole



SIE-CI41-Short-Hook
SIE-SL41-Short-Hook



SIE-CI41-Long-Hook
SIE-SL41-Long-Hook



SIE-CI100-Tri
SIE-SL100-Tri



SIE-CI-Standard
SIE-SL-Standard



(closed)



(extended)

SIE-BL-Expand-Bracket
SIE-SL-Expand-Bracket

ATC Sienna Outdoor Optional Mounting Brackets

Product Code	Description	Colour	Dimensions
SIE-BL66-Pole	Pole Bracket. Opens up to 66mm	Black	34-66mm diameter
SIE-SL66-Pole	Pole Bracket. Opens up to 66mm	Silver	34-66mm diameter
SIE-BL100-Pole	Pole Bracket. Opens up to 100mm	Black	70-100mm diameter
SIE-SL100-Pole	Pole Bracket. Opens up to 100mm	Silver	70-100mm diameter
SIE-CI41-Short-Hook	150mm Hook for under awnings and parasols. Opens up to 41mm	Cast Iron	150 x 50 x 47mm
SIE-SL41-Short-Hook	150mm Hook for under awnings and parasols. Opens up to 41mm	Silver	150 x 50 x 47mm
SIE-CI41-Long-Hook	300mm Hook for under awnings and parasols. Opens up to 41mm	Cast Iron	300 x 50 x 47mm
SIE-SL41-Long-Hook	300mm Hook for under awnings and parasols. Opens up to 41mm	Silver	300 x 50 x 47mm
SIE-CI100-Tri	Triple bracket for 3 heaters on Pole with Hinged opening Max 100mm pole	Cast Iron	40-130mm diameter
SIE-SL100-Tri	Triple bracket for 3 heaters on Pole with Hinged opening Max 100mm pole	Silver	40-130mm diameter
SIE-CI-Standard	Standard bracket	Cast Iron	150 x 90 x 30mm
SIE-SL-Standard	Standard bracket	Silver	150 x 90 x 30mm
SIE-BL-Expand-Bracket	Expanding Wall Bracket	Black	500 x 40 x 40mm
SIE-SL-Expand-Bracket	Expanding Wall Bracket	Silver	500 x 40 x 40mm



Extendable bracket closed



Extendable bracket open

ATC Riviera Outdoor Quartz Infrared Electric Heaters



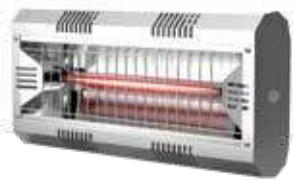
ATC Riviera 2000W Infrared Heater Black



ATC Riviera 4000W Infrared Heater Black



ATC Riviera 6000W Infrared Heater Black



ATC Riviera 2000W Infrared Heater Silver



ATC Riviera 4000W Infrared Heater Silver



ATC Riviera 6000W Infrared Heater Silver

Optional Bluetooth Heater Controller



See page 19

Waterproof IP55
'Feel the Heat'

Description

Product Code	RIV200	RIV400	RIV600
Colour	Black	Black	Black
Product Code	RIV200-SL	RIV400-SL	RIV600-SL
Colour	Silver	Silver	Silver

Optional Heater Controller

Product Code	INFRA4400
Description	Bluetooth Infrared Heating Controller c/w IR Remote

High Performance

The Riviera High Performance range of Outdoor Quartz Infrared electric heaters are suitable for many applications, industries and environments.

Fitted with Gold lamps the heaters provide a comfortable level of heat. The Riviera Heaters are unique in that they can be mounted on the Wall, on the Ceiling / Roof or can be Hung from a height to provide heat in unusual locations.

Available in three sizes, 2000W, 4000W and 6000W, rated IP55 Weatherproof, there is a Riviera Heater for every application.

Product Features

- Modern Design
- Parabolic Reflector for Even Spread of Heat
- Instant Heat
- Creates Comfortable Environment
- 3 Sizes; 2000W – 4000W – 6000W
- Energy Efficient
- Multiple Mounting Heights
- Multiple Mounting options – Wall – Ceiling – Hung
- Unique adjustable design allows up to 30° of directional adjustment (4000W & 6000W Versions)
- Suitable for Commercial – Industrial Applications
- Maintenance Free
- Easy to Install
- IP55 Weatherproof



Saving Energy
Reducing the
Carbon Footprint



2
YEAR
WARRANTY

ATC Riviera Outdoor Quartz Infrared Electric Heaters

Technical Details

Description

Model	Riviera 2000W	Riviera 4000W	Riviera 6000W
Product Code	RIV200 RIV200-SL	RIV400 RIV400-SL	RIV600 RIV600-SL
Colour	Black Silver	Black Silver	Black Silver

Electrical Specifications

Power output (Watts)	2000	4000	6000
Voltage	220-240	220-240	220-240
Frequency (Hertz)	50-60	50-60	50-60
Current (Amps)	9	18	3 x 9
Lamps	1	2	3
Lamp Arrangement	Single	Stacked Vertically	Stacked Vertically
Lamp Type	Gold	Gold	Gold
Lamp Life ¹	5000 hrs	5000 hrs	5000 hrs
¹ Lamp life is extended by approximately 25% when used with a soft start controller (see INFRA-4400 p.17)			
Emission	IR-A	IR-A	IR-A

Mounting and Installation

Installation	Wall/Ceiling/Hanging	Wall/Ceiling/Hanging	Wall/Ceiling/Hanging
Mounting height	2.5-3	3-4	3-4
Heating Area (M ²) * @45°	10	24	32
Heating Area (M ²) * when hung	10 @ 3m	32 @ 4m	48 @ 4m
Minimum cable size	3 x 1.5 ²	3 x 2.5 ²	5 x 1.5 ²
Supplied with or without cable	Without	Without	Without
Lamps switchable or all together	N/A	All Together	All Together
Dimmable (With controller)	Yes	Yes	Yes
With/without grill	With	With	With

Dimensions & Weight

Dimensions (HxWx D) mm	235x496x313	375x496x313	515x496x313
Weight (Kg - Nett)	2.2	3.0	3.8
IP Rating	IP55	IP55	IP55

Approvals

Certifications	CE, IMQ	CE, IMQ	CE, IMQ
----------------	---------	---------	---------



Hotels



Restaurants



Pubs



Sports Facilities



Stadia



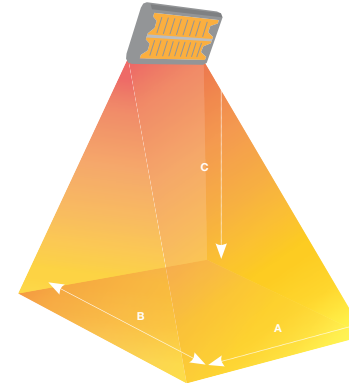
Factories



Warehouses

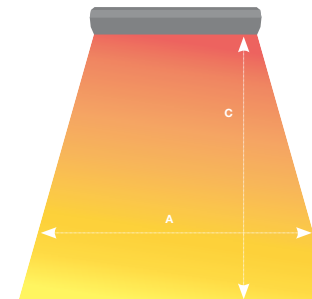
Heating Area m²

Wall Mounted 45°

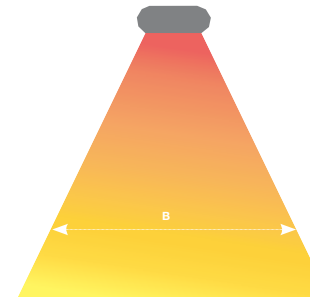


Model	Wall Mounted 45°		
	A	B	C
RIV200	5	2	3
RIV400	8	3	4
RIV600	8	4	4

Ceiling Mounted



Side View



End View

Model	Ceiling Mounted		
	A	B	C
RIV200	5	2	3
RIV400	8	4	4
RIV600	8	6	4

It is recommended to install Outdoor radiant heaters protected from strong breezes or crosswinds. Based on average ambient temperature of 10°C.

ATC Alfresco Outdoor Infrared Heater



Optional Bluetooth Heater Controller



See page 19

Waterproof IP55
'Feel the Heat'

Description

Product Code ALH1800

Optional Heater Controllers

Product Code INFRA4400

Description Bluetooth Infrared Heating Controller c/w IR Remote

Product Code EXTL5W

Description Exterior Time lag 2-20 mins 16 amp, will control 1 or 2 heaters

The **ATC Alfresco energy efficient short wave infrared heater** is an independently approved IP55 heater for use outdoors in wet conditions. The heater is manufactured in Europe and is already installed in many Pubs, Restaurants, Hotels and outdoor leisure areas where local instant heat is required. These heaters can be operated independently or in zones by direct switching or with dimmable controllers.

Product Features

- 1800W Long Life Lamp with Tungsten Wire
- Life Lamp 5000 hours¹
- Low Running Costs
- Instant Heat
- Powerful Heat output
- Waterproof IP55
- Easy to Install
- Silent Running
- Wall Bracket Included
- Approvals: IMQ, CE, EMC, EMF, RoHS



Restaurants



Pubs



Homes



Hotels

Technical Details

Power W	1800
Voltage (V)	230
Frequency (Hz)	50
Amps	7.8
Dimensions (H x W x D) mm	830x120x38
Weight (kg)	1.7kg
IP Protection	IP55



**Saving Energy
Reducing the
Carbon Footprint**



**2
YEAR
WARRANTY**



ATC **Alfresco** Portable Outdoor Infrared Heater



Waterproof IP55
'Feel the Heat'



Description

Product Code	ALFRESCO-PORT
Product Code	TRIPOD-ALFRESCO
Product Code	TRIPOD-BRACKET

The Alfresco Portable consists of three part numbers as above: the Alfresco Heater, Tripod and Bracket.

The Alfresco Portable Outdoor Heater is the energy efficient option to portable heating. It can be set up in minutes, at just 1800watts, costs £0.30p per hour to run and is the environmentally friendly option

Product Features

- Modern Discreet Design
- Low Glare Element
- Parabolic Reflector for Even Spread of Heat
- 1800W Energy Efficient
- Life Lamp 5000 hours
- Power Switch to turn On/Off
- Wired with 4M Power Lead and 13A Plug
- Tripod – Sturdy and Portable
- Easy to Assemble
- Mounting height 1.8M
- IP55 Waterproof



Restaurants



Pubs



Homes



Hotels



Detachable Connector



Power Switch

Technical Details

Power W	1800
Voltage (V)	230
Frequency (Hz)	50
Amps	7.8
Dimensions (H x W x D) mm	830x120x38
Weight (kg)	1.7kg
IP Protection	IP55

ATC Hot Top Long Wave Infrared Heater



Description

Product Code	9818	9824
Power W	1800	2400

The Hot Top Infrared Radiators are a new design creating a new experience in heating, a discreet presence, without any light or glare. These low – profile aluminium electric heaters co-ordinate with many décor styles, and provide silent operation along with superior performance compared to gas, with no harmful emissions or odours.

Product Features

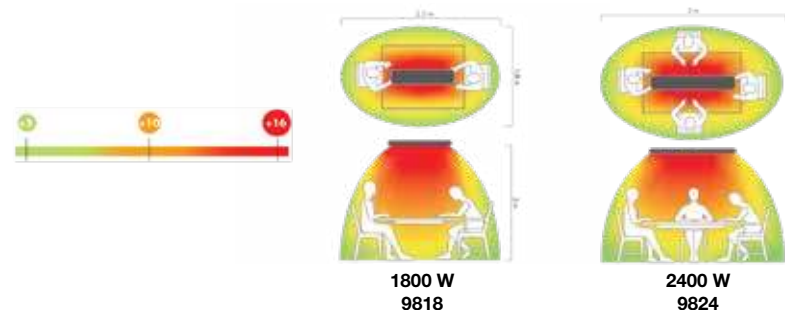
- Two Heaters available, 1800W and 2400W
- Low Profile Aluminium Finish
- Long Life Anodized Aluminium Radiating Element
- Exceptional Heat Output
- Silent Operation
- Discreet without any light or glare
- IP55 High Performance Protection
- Wall Bracket and 3m Cable Supplied
- Designed for sheltered areas only
- Energy Efficient

Approvals

- Complies with LOT 20 Eco – Design Directive 2009/125/EC
- CE and RoHs Approved
- Complies: EN 60335-1, EN 60335-2-30

Technical Details

Power W	1800	2400
Insulation Class	Class 1	Class 1
IP Protection	IP55	IP55
Voltage (AC)	220-240	220-240
Dimensions (H x W x D) mm	58 x 201 x 1320	58 x 201 x 1620
Approvals	CE	CE
Weight (kg)	6.4	7.8
Mounting Height (metre)	2 – 2.4	2 – 2.4



ATC INFRA4400 Bluetooth Infrared Heating Controller



The ATC INFRA4400 Bluetooth heating control

allows 0-100% control of any radiant heater or heaters up to 4.4kW from an easy to use App available from your app store.

The App features a delay off timer along with multiple zone control when paired with more than 1 controller.

In cases where Bluetooth is not used the INFRA4400 comes complete with a separate IR handset providing 5 step control.

Technical Details

Product Code:	INFRA4400
Electrical Supply:	220 – 240vAC 50/60 Hz Single phase
Max Rating:	4.4kW
Control Type:	0-100% Variable output (Bluetooth) 5 Step (IR Control)
Dimensions:	195 x 118 x 63mm (whd)
IP Rating:	IP56
Connections:	3x L/N/E 4mm ² Screw Connections 1x Supply, 2x Output
Soft Start	Yes

100 Variable Output control via app



Simple to use
iOS or Android app



Hotels



Restaurants



Homes



Pubs

ATC Heating Design Service



To ensure the most **energy efficient and comfortable** method of heating an area or space, it is important that a number of criteria are taken into consideration. These include; room dimensions, glazed areas, insulation levels and heat levels in adjacent areas.

Our dedicated Heating Design Team provides a full heating design and heat loss calculation to determine the correct solution for your building.

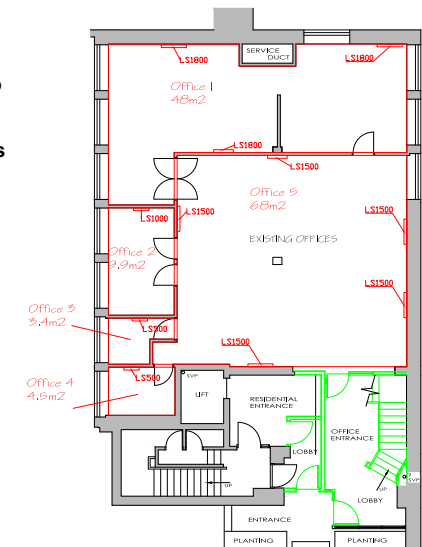
Send your CAD drawing or simple sketches and dimensions to technical@atc.ie

From this drawing we will:

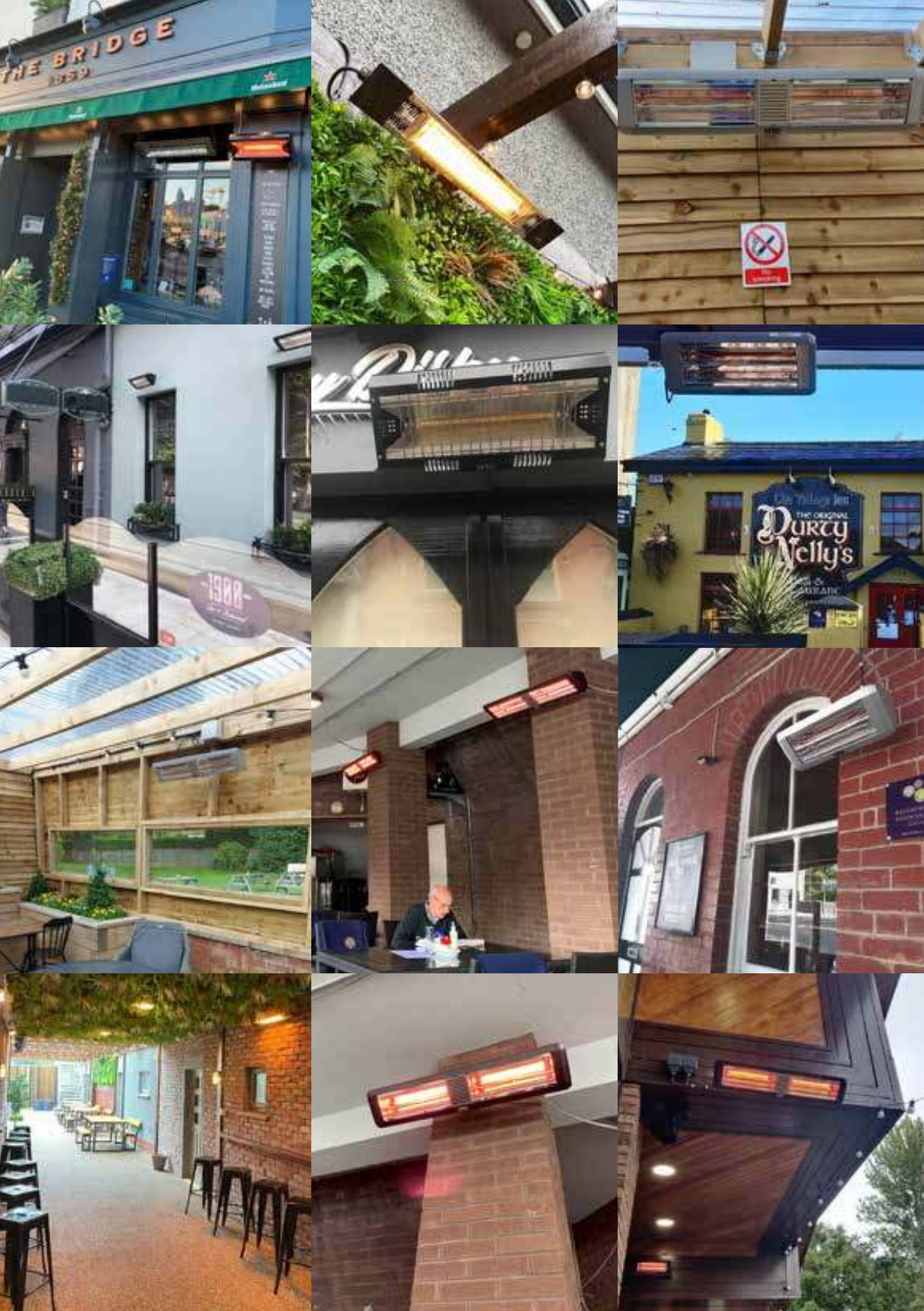
- Calculate the area and volume of each space
- Determine the amount of energy required to heat the area.
- Confirm the type and amount of heaters that should be installed
- Provide a Heating Consumption Cost Analysis showing approximate annual costs

technical@atc.ie

- General Heating
- Ceiling Heating
- Under Floor Heating
- Outdoor Heating



Sample CAD drawing showing radiator sizes and locations



Are you ready to Re-Open?

ATC **Tiger ECO** High Speed Hand Dryer Ultra Modern Design



- Hygienic No Touch Operation
- Dries hands in 15 Seconds
- Low Energy (750/1400W)
- Super Silent—70dB @ 1m
- Optional HEPA Filter – removes 99.97% of bacteria particles



HEPA Filter

ATC **Cub** High Speed Hand Dryer Low Energy, Unique Design



- Hygienic no touch operation
- Dries Hands in 15 Seconds
- Low Energy (600/1300W)
- Available in three colours: Chrome, Black & White

ATC **Dahlia** Hand Sanitiser & Soap Dispenser Wash—Dry—Sanitise



- Automatic No Touch Operation
- Hygienic
- 36,000 Operation Battery Life
- Battery Powered: 6 x AA batteries
- Wall mounted in Minutes
- **Optional Free Standing Station with Adjustable Heights**

ATC **Instantaneous Water Heater** Compact Energy Efficient Water Heater



- Easy to Install
- ON/OFF switch – 3 heat options
- Wall mounted – reinforced hanging bracket with internal steel bar
- External casing – made from strong ABS plastic
- Capillary thermostat
- High concentration magnesium anode
- No stored water avoiding legionella



Hotels



Restaurants



Pubs



Sports Facilities



Stadia



Factories



Warehouses

01 467 8301 – sales@atc.ie – www.atc.ie



Head Office & Showrooms:

ATC House,
Broomhill Drive, Tallaght,
Dublin 24,
Ireland, D24 EF99.

IRL Tel: 01 4678301
UK Tel: 0203 564 9164
Fax: 353 (1) 452 0887
Email: sales@atc.ie



DISCLAIMER: In this catalogue we have attempted to ensure all the information and dimensions are correct. We cannot and will not take responsibility for mistakes or omissions of information to any product.

 **atc.ie**
 **atcelec.co.uk**



QUALITY APPROVED
COMPANY

atc[®]

Heating • Ventilation • Hand Dryers